



PATCH MANAGER

INFRASTRUCTURE MANAGEMENT SOFTWARE

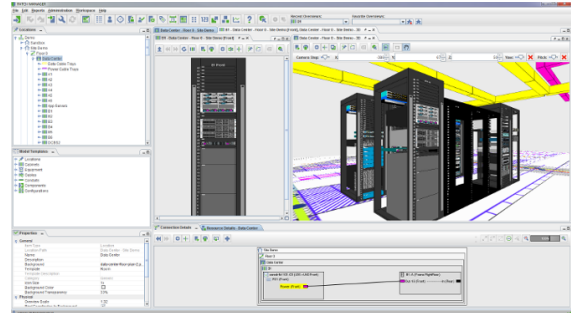
DATA SHEET

# CONNECTIVITY AND ASSET MANAGEMENT MADE EASY

PATCH MANAGER

## CONNECTIVITY AND ASSET MANAGEMENT MADE EASY

DOES THE DCIM PRODUCT YOU ARE LOOKING AT HAVE “CONNECTIVITY MANAGEMENT FEATURES” OR DOES IT ACTUALLY HAVE CONNECTIVITY MANAGEMENT? CAN IT REALLY SAVE YOU TIME AND MONEY WHEN MANAGING YOUR CONNECTIVITY?



### Connectivity Management

The cabling of any data center is an integral and vital element of the infrastructure, yet the management of the Physical Layer seldom receives the attention it deserves. Failures and inconsistent use of cabling can have a major negative impact in terms of reliability, efficiency and quality of offering and can lead to significant associated costs. The good news is that these problems can easily be obviated with the introduction of a Connectivity Management Software Solution.

### A Specialized Solution

A simple spreadsheet or database together with some drawing package can do the trick in small infrastructures. However, the sheer complexity involved in maintaining the cabling in medium to large Data Centers clearly requires a more extensive tool. The so-called 'full blown' Data Center Infrastructure Management Solutions or DCIM-packages may offer some kind of connectivity management but again cannot provide the benefits of a specialized product.

### For Data Center Specialists

PATCH MANAGER gives clear insight into the purpose and usage of every cable by presenting data center locations, rack elevations, devices and cabling in intuitively navigable hierarchical graphical views. With realistic template based modeling that maps one-to-one with the actual infrastructure, PATCH MANAGER provides data center professionals with a powerful application for managing their connectivity in a simple yet effective manner.

### DCIM+

PATCH MANAGER provides a powerful solution for the management of your data center floor space, rack space, IT assets, energy and other resources with integrated end-to-end connectivity management capabilities.

### Productive in no time

Gone are the days when professionals are willing to accept a tool into their work flow that is so complex that it requires considerable training and ongoing consulting services just to be usable. With PATCH MANAGER, you can be happily up and running in no time. Application deployment and configuration are a snap and the highly intuitive user interface will shield you from the underlying power of the application.

### System Integration

To augment your current management system architecture with a 'best-of-breed' approach or to integrate live data (for example from SNMP sources, network management systems or device discovery tools) into the application and avoid maintaining the same data in multiple data stores, PATCH MANAGER provides an extensive API for integration with third party systems. Additionally, a number of out-of-the-box integration tools are provided in the standard offering. In keeping with our philosophy of open, widely accepted standards, the API uses Web Services (via JSON/REST) technology.

# CONNECTIVITY AND ASSET MANAGEMENT MADE EASY

---

## Low cost of Ownership

PATCH MANAGER seamlessly fits into your organization's application portfolio, imposing no additional requirements. PATCH MANAGER is easy to deploy, with out of the box OS support for Windows and Linux, all popular commercial and open source database types and a standard browser based client interface. A further option that is becoming ever more popular is to take advantage of the PATCH MANAGER Software-as-a-Service or (SaaS) solution, whereby the application is instead hosted on cloud servers, completely removing the need for any installation, configuration or maintenance.

## Our Customers

A growing number of data centers of all shapes and sizes rely on PATCH MANAGER every day. To learn more, please explore our website and request a trial online to find out for your self how your data center can benefit.

### CONTACT INFORMATION

For more information visit:  
[www.patchmanager.com](http://www.patchmanager.com)  
or email: [info@patchmanager.com](mailto:info@patchmanager.com)

Copyright © 2018 Patchmanager B.V. All rights reserved.

These materials are subject to change without notice and for informational purposes only, without representation of warranty of any kind.