



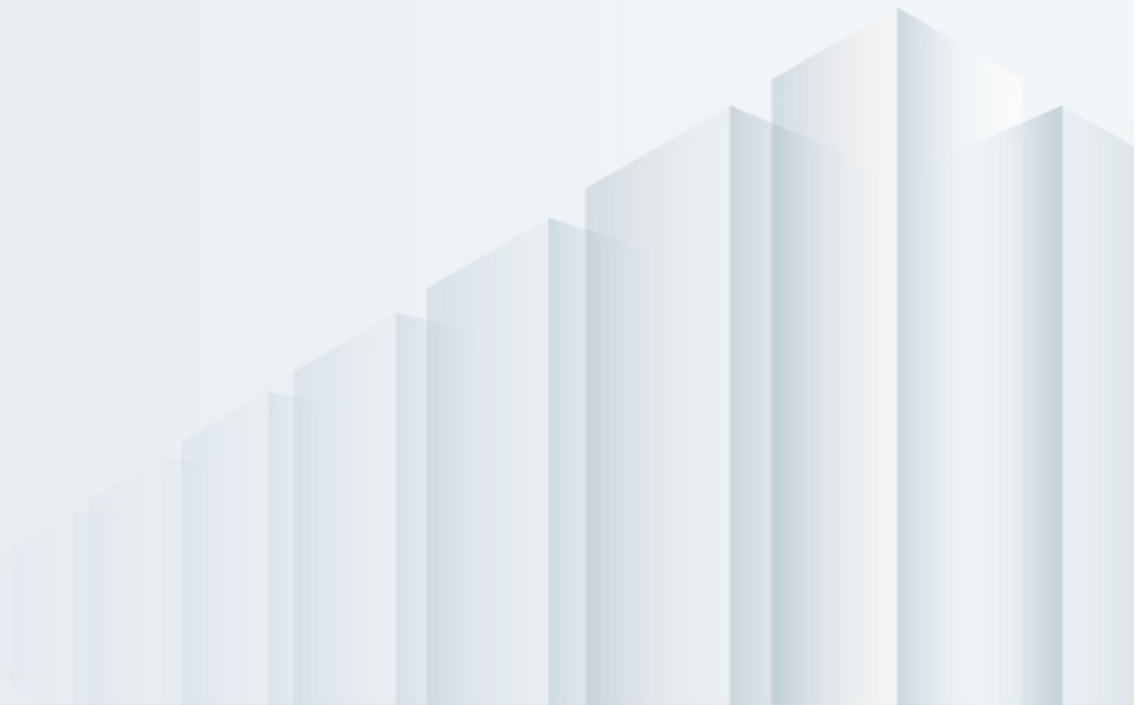
PATCH MANAGER

INFRASTRUCTURE MANAGEMENT SOFTWARE

DATASHEET

THE LEADING CABLE AND ASSET MANAGEMENT SOFTWARE SOLUTION

PATCH MANAGER



THE LEADING CABLE AND ASSET MANAGEMENT SOFTWARE SOLUTION

PATCH MANAGER

The Leading Cable and Asset Management Software Solution

PATCH MANAGER gives you the tools you need to manage your physical network layer simply, efficiently and cost-effectively. By providing a full, transparent, up-to-date model of the physical Layer, PATCH MANAGER makes it easy to visualize and analyze your complete end-to-end cabling infrastructure, IT assets and racks. With less time spent tracking connections and less room for errors, the result is less downtime and reduced maintenance costs.

An Enterprise Class solution suitable for SMEs and Large Corporations Alike

For Network Professionals

PATCH MANAGER gives clear insight into the purpose and usage of every cable by presenting network locations and equipment in intuitively navigable hierarchical graphical views. With realistic modeling that maps one-to-one with actual infrastructure, PATCH MANAGER provides network professionals with a simple to use but powerful application.

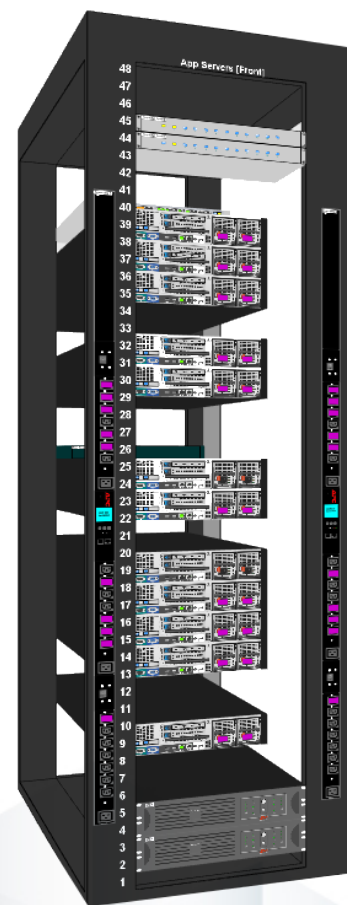
A Universal Solution

PATCH MANAGER is the only truly adaptable solution for documenting and administering the Physical Layer of your network. It is a universally applicable solution with template-based modeling of network locations and components that enables application to a wide variety of networks. Easily configurable and fully customizable to every user's requirements, it is a future-proof investment that adapts to your current and evolving infrastructure.

PATCH MANAGER Key Features

- Easy modeling of complete network infrastructure
- Management of copper, fiber, WAN, LAN and power infrastructure
- Optimization of 'Moves', 'Adds' and 'Changes' in the physical layer
- Creation of realistic rack and equipment visualizations
- Optimization of use of available network capacity
- Planning rack space and power consumption
- Assessing the impact of loss of connectivity of power and network connections
- Data mining assets and connectivity
- Improving network communication paths

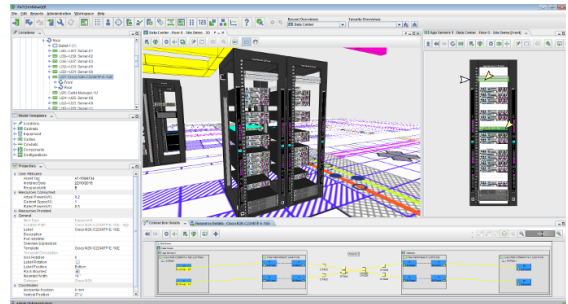
PATCH MANAGER enables you to significantly reduce time and money lost on physical network layer maintenance issues.



THE LEADING CABLE AND ASSET MANAGEMENT SOFTWARE SOLUTION

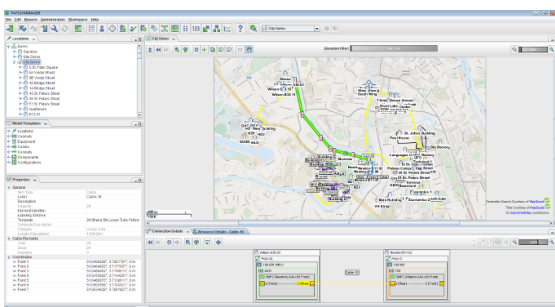
Sets the standard for Next Generation Cable Management Software

PATCH MANAGER is a future-proof investment that scales to support many roles such as network administrators, network engineers, help-desk support, asset and floor managers. Its useful features and intuitive operation improves and simplifies network management, resulting in fewer errors and less downtime. PATCH MANAGER is architected on popular, open IT standards allowing optional integration with external systems such as switch, telephony and building management systems.



- **Low maintenance, low cost**
PATCH MANAGER's robust, server based architecture scales seamlessly with your enterprise growth to offer continued reliable, 24/7 operation, requiring minimal maintenance.
- **Always accessible with the latest information**
PATCH MANAGER offers a full web application as well as a smart-phone client. The server automatically synchronizes data with client processes, ensuring the latest data is always at the fingertips of both mobile and desktop users.
- **User access control**
PATCH MANAGER incorporates fully customizable fine grained policy-based user access management that gives detailed control of who is allowed to do what, ensuring that user actions are kept in line with their assigned job role.
- **Reporting**
PATCH MANAGER provides fully customized access and presentation of network data, ensuring that a variety of users can generate reports relevant to their requirements.
- **Lifecycle support**
PATCH MANAGER includes support for the whole network infrastructure lifecycle including design, installation, operation and decommissioning. This support assists proper planning and execution of each stage and is a useful, time-saving feature in many work processes.
- **Installation**
PATCH MANAGER is simple to install and set up. With easy migration from existing legacy data sources, you will be up and running in no time with PATCH MANAGER.
- PATCH MANAGER is available as both an **in-house** and a **Software-as-a-Service (SaaS)** solution.

Find out for yourself how PATCH MANAGER can ease your network management by requesting a trial version through our website <https://patchmanager.com>



CONTACT INFORMATION
For more information visit:
<https://patchmanager.com>
or email: info@patchmanager.com

Copyright © 2018 Patchmanager B.V. All rights reserved.

These materials are subject to change without notice and for informational purposes only, without representation of warranty of any kind.