



PATCH MANAGER

INFRASTRUCTURE MANAGEMENT SOFTWARE

BROCHURE

GIS EXTENSION

PATCH MANAGER



PATCH MANAGER GIS EXTENSION

Overview

The PATCH MANAGER Geographic Information System (GIS) Extension provides a seamless mechanism for integrating geographical maps into PATCH MANAGER graphical location overviews. Geographical maps are automatically loaded into the overview and PATCH MANAGER objects in these locations, such as buildings, manholes, conduits and cables are then accurately represented and managed in terms of their geographical coordinates. The PATCH MANAGER GIS Extension is suitable if you would like to manage campus, city or inter-city Outside Plant physical assets and connectivity in PATCH MANAGER where there is an importance on:

- Positioning of buildings, manholes, conduits and cables according to GPS coordinates
- Geographical location of splicing equipment
- Conduit / cable length calculations
- Connection attenuation calculations
- Pinpointing distances on a map along a connection (for example, to use with OTDR trace results)

Map Integration

With simple configuration steps, geographical maps can be integrated into PATCH MANAGER from the most popular open source and commercial mapping sources.

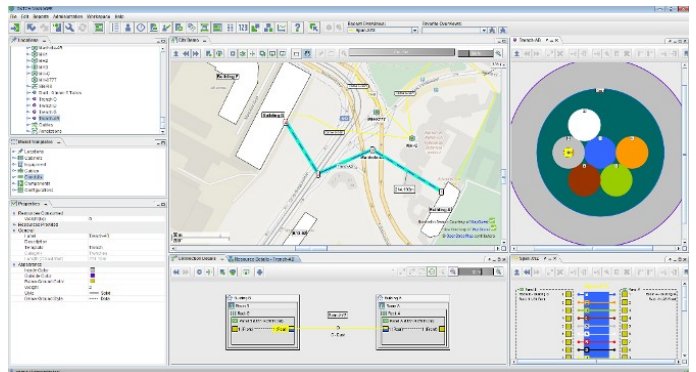
The map sources may reside on the internet or may be private servers within your organization, for

example to leverage your existing internal mapping services.

In addition to retrieving maps dynamically from map servers, PATCH MANAGER also supports the option of integrating static images, such as campus plans into PATCH MANAGER geographically-aware overviews.

Data Integration

Position and feature data relating to PATCH MANAGER objects in geographical location overviews can be easily interchanged either manually via the PATCH MANAGER GUI or automatically via the PATCH MANAGER REST API.



CONTACT INFORMATION

For more information visit:
<https://patchmanager.com>
or email: info@patchmanager.com