

Cable plant management

Blog Article



PATCH MANAGER
infrastructure management software

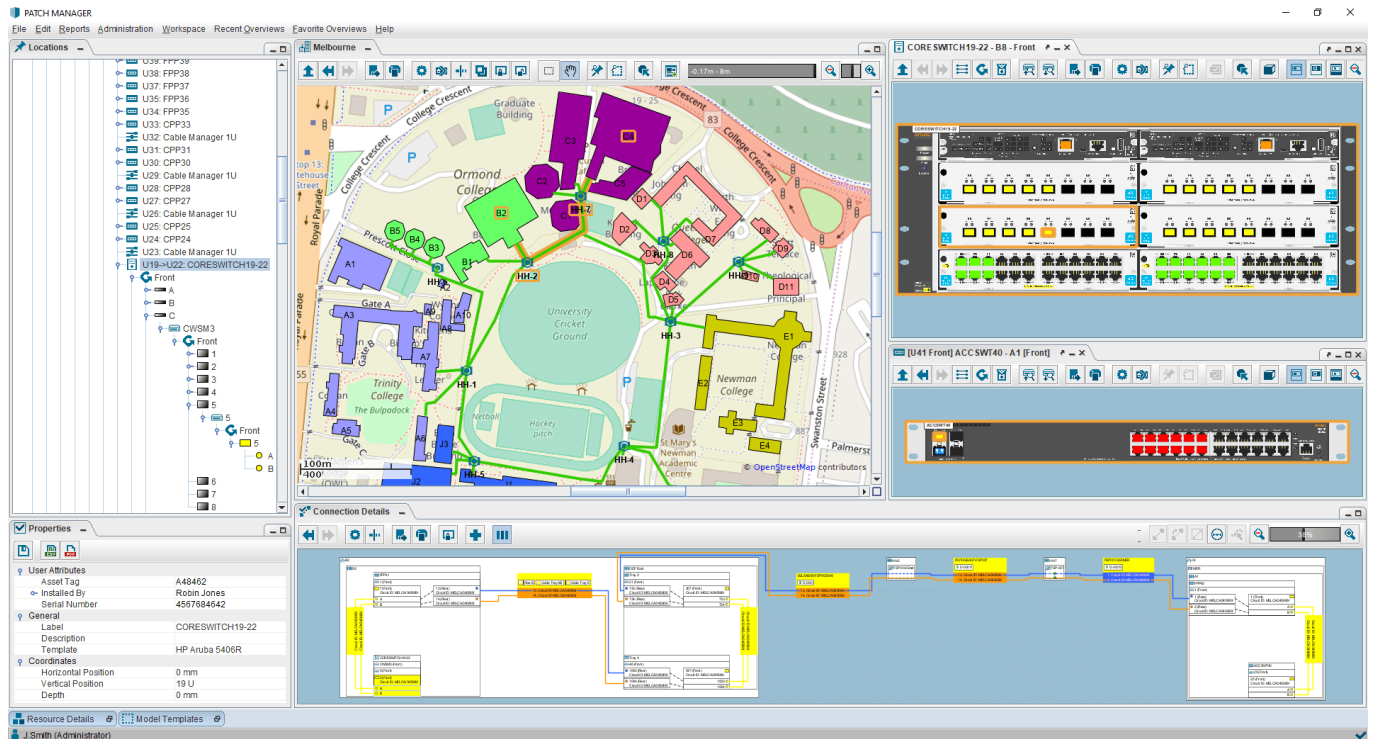
Contact information:

For more information visit:
www.patchmanager.com
or e-mail: info@patchmanager.com

Copyright © 2002 - 2024 Patchmanager B.V.
All rights reserved.

These materials are subject to change without notice and for informational purposes only, without representation of warranty of any kind.

This article describes what **cable plant management** is and outlines why it is important. Following this, it introduces PATCH MANAGER as the ideal solution for cable plant management.



PATCH MANAGER interface - Outside plant – Campus overview

What is cable plant management?

A **cable plant** is the complete copper and fiber optic subsystem deployed to transmit electrical and optical signals between active communication equipment. The cable plant constitutes the lowest layer of the [OSI network model](#) - the physical layer. **Cable plant management** is the design, documentation, and maintenance of this physical layer.

A **cable plant** is typically sub-divided into two main areas - inside plant and outside plant.

- **Inside plant** refers to the cabling and equipment installed within a building. Key components of an inside plant include entrance facilities, equipment rooms, backbone cabling, and telecommunication rooms.
- **Outside plant** refers to the cabling and supporting infrastructure (such as conduits, cabinets, splice junctions, hand-holes, towers, or poles) located between buildings.

The importance of cable plant management

The physical layer assets and connectivity are vital elements of any infrastructure and constitute the foundation of the network stack. Since higher level network issues can often be traced back to problems in the lower level, the importance of managing these vital elements can therefore not be undervalued.

Effective management of physical assets and connectivity requires a specialized solution that offers comprehensive capabilities in the domain. These capabilities should include, but not be limited to:

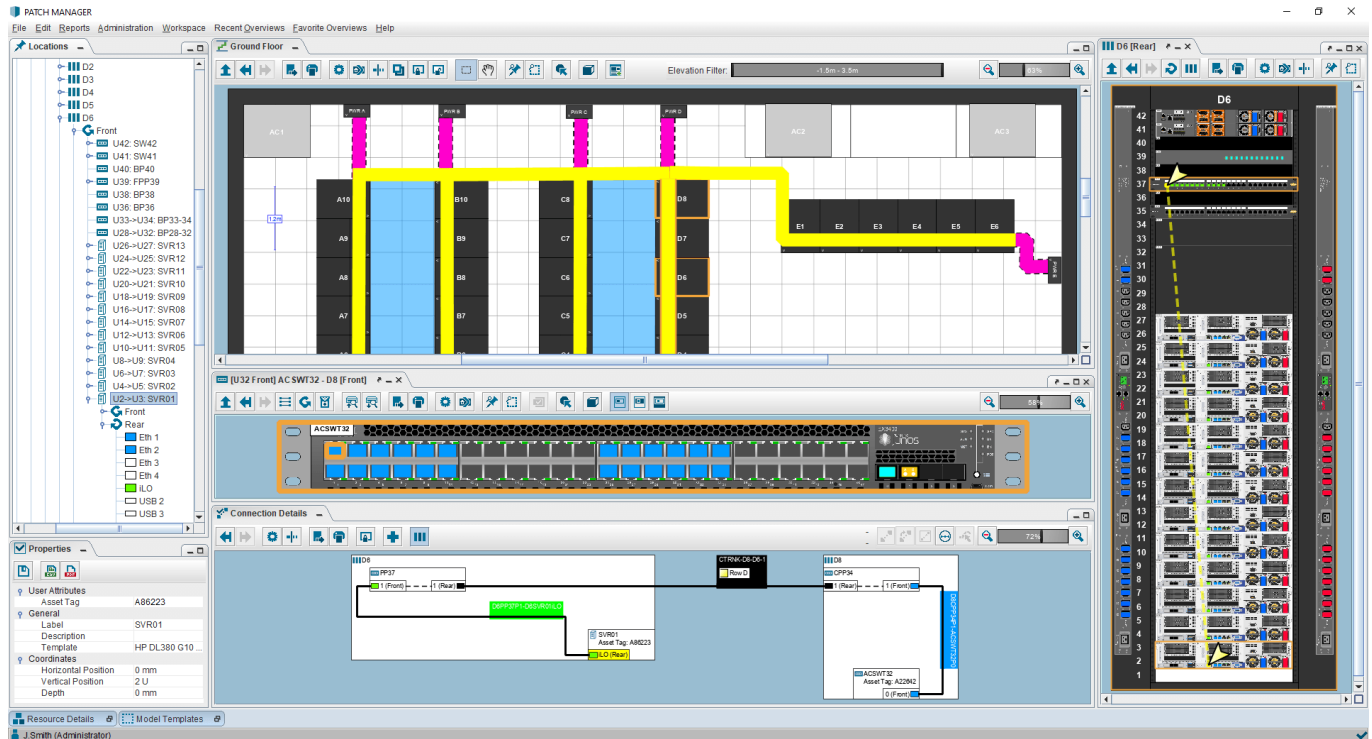
- Documentation and management of every component of the physical layer
- Connectivity management
- Change management
- Reporting
- Visualization
- And many more

To learn more about the reasons you should consider investing in a cable and asset management solution, read our article on this topic [here](#).

PATCH MANAGER is the comprehensive cable and asset management software solution

PATCH MANAGER is the leading software solution for cable and network asset management and is designed at the core to support both outside and inside cable plant networks. It assists you to plan and troubleshoot by providing detailed modeling, visualization and reporting on all aspects of your end-to-end physical layer network infrastructure.

PATCH MANAGER helps you to manage your change processes and audits through work orders and customizable workflows and provides an extensive REST API for third-party system integration.



PATCH MANAGER interface – Inside plant – Data center connection tracing

If you would like to know more about PATCH MANAGER's features and benefits, [visit our website](#) or [request a personal online demo here!](#)