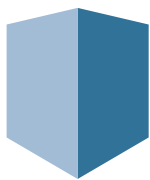


# The Comprehensive Cable & Asset Management Software Solution

---

## DCIM Datasheet



**PATCH MANAGER**  
infrastructure management software

### Contact information:

For more information visit:  
[www.patchmanager.com](http://www.patchmanager.com)  
or e-mail: [info@patchmanager.com](mailto:info@patchmanager.com)

Copyright © 2002 - 2024 Patchmanager B.V.  
All rights reserved.

These materials are subject to change  
without notice and for informational  
purposes only, without representation  
of warranty of any kind.

# Best-of-Breed Solution for Connectivity and Asset Management

PATCH MANAGER is a best-of-breed software application for flawlessly managing your physical layer assets and connectivity. In addition to allowing you to take complete control over your floor space, rack space, IT equipment, and connectivity, PATCH MANAGER enables you to gain clear insight into the purpose and usage of every asset and cable in your infrastructure.

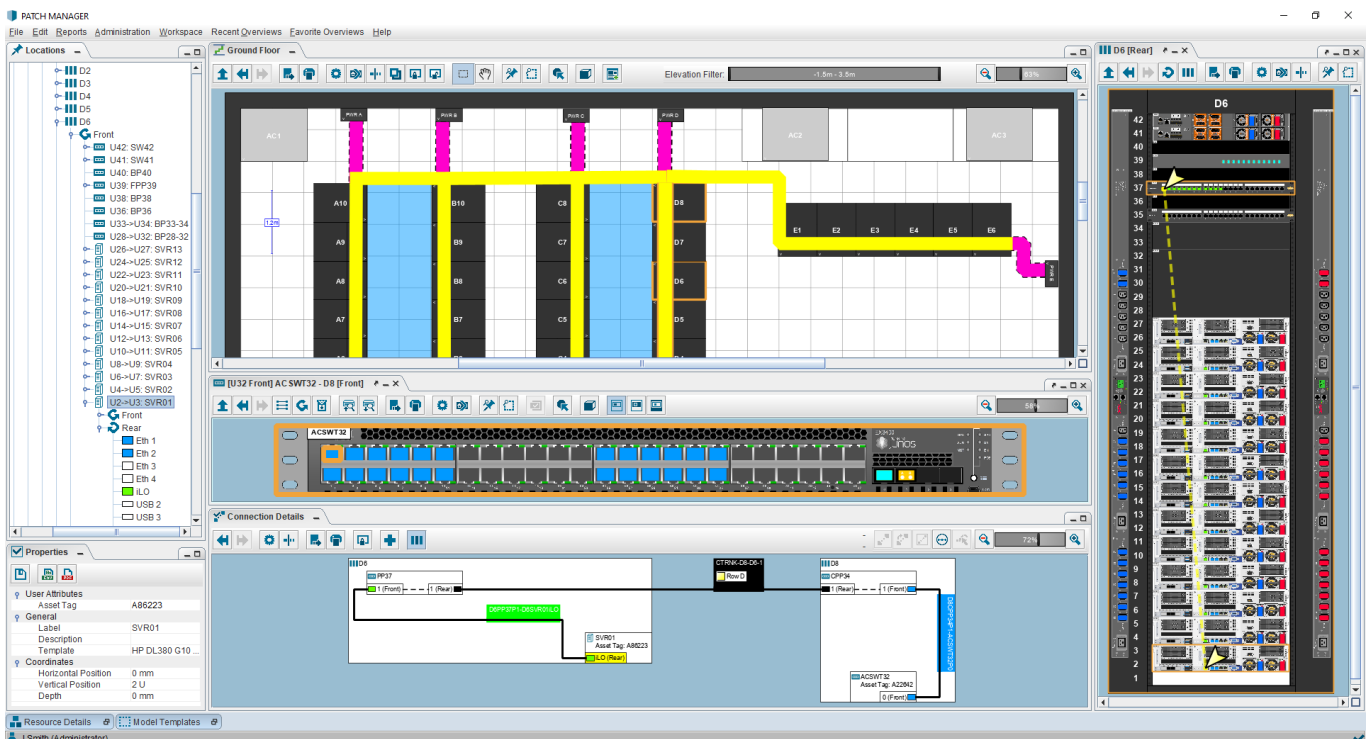
## DCIM Key Features

### Connectivity Management

- Detailed end-to-end connection tracing across your data center(s)
- Fully customizable views, displaying only the information that you require
- Highlight connection routes in floor plans
- Route generation and change control for new circuits
- Cable label management
- Be on top of your fiber management with strand level detail
- Manage any type of cable (fiber, copper, power)

### System Integration

- Extensive standard JSON/REST API
- Data import, data modification, data retrieval, change control
- Sample code and fully documented description of usage are available for the implementation process



*PATCH MANAGER data center connection tracing*

## Capacity Planning

- Plan your rack space usage and data center floor space
- Manage the lifecycle of your data center assets
- Import from existing data sources

## Highly Customizable Asset Management

- Track asset status and lifecycle
- User-defined data fields for storing custom information against any asset
- Smart search capabilities
- Bulk add, change, and delete
- Management and engineering reporting

## Data Center Visualization

- Realistic 2D and 3D visualization, rack elevations
- Import floor plans
- Accurate equipment and cabinets dimensions
- Manage overhead cabinets, trays, and underfloor cabling

## Fully Extensible Data Model

- Extensive template library
- Store custom information on any object
- Create custom data types
- Configure resources (e.g., floor space, electrical power, and cooling)
- Automatically calculate total consumption and provision of resources

# PATCH MANAGER General Features

## Manage Your Changes

- Work Orders for managing your 'Moves', 'Adds' and 'Changes'
- Features to coordinate work with teams and projects
- Automatically generated bills of materials
- Automated notification e-mails

## Report and Analyze

- Powerful reporting functionality
- Easily generate customized reports
- Tabular and graphical elements in reports
- Export to Excel/PDF/JSON

## Software-as-a-Service (SaaS) or In-House

PATCH MANAGER is available as a SaaS solution or as an in-house deployment. Having offered our PATCH MANAGER SaaS solution since 2010, we are a highly experienced provider, and have a proven track record of operating a secure and reliable service, with a global reach.

In-house, it can be deployed on Windows or Linux operating systems, with out-of-the-box database support for most widely used commercial and open-source database management systems.

## Easily Navigate Through Hierarchical Levels & Visualize Your Network

- 2D and 3D visualization
- Detailed physical network hierarchy
- Interactive graphical views
- Detailed and accurate cabinet elevations
- Easy-to-use drag-and-drop features



*PATCH MANAGER data center 3D overview*

## Resources

For more information about PATCH MANAGER, visit our website <https://patchmanager.com/>.

You can also download our resource documentation here: <http://patchmanager.com/downloadables/>

Find out for yourself how PATCH MANAGER can ease your data center infrastructure management by requesting a trial version through our website <https://patchmanager.com/request-personal-demo/>. A personal online demo of PATCH MANAGER is a great, no strings attached way to take a look at our product and have your individual questions answered. Typically lasting 30-45 minutes, a representative will walk you through the features relevant to your requirements.